



## Kombi Conversions Explained

**SAFE, LEGAL & INSURANCE FRIENDLY – COMPLIES WITH LATEST EC/EU SAFETY DIRECTIVE**

Here at BEBB/SALOP VANS we offer a comprehensive Kombi Conversion Service, using genuine VW seats, Seat Belts, Floor Mounts (Quick Release) and Bebb Tested C Pillar Reinforcement Plates – and this work can be carried out to **ANY of the VW T5's we have in stock** – turning a **3 seat VAN into a 5 or 6 Seat PEOPLE CARRIER without upsetting your insurers!**

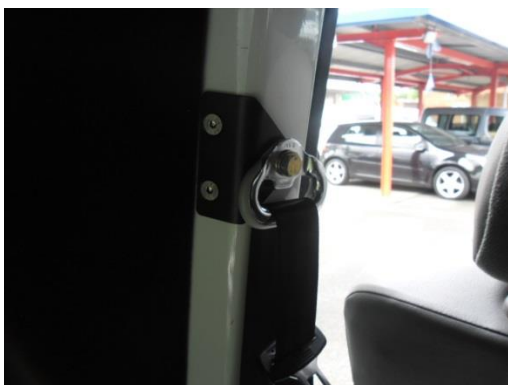


We install GENUINE VW Floor Pockets and Trims to the proper pick up points in the Chassis

(Flooring available at extra cost)



We ONLY install GENUINE VW Seat Belts and Seats, so there is no Cross-Contamination between the Male and the Female Buckles on the Belt/Seat



As the van you want to convert will be on an N1 Chassis, the aperture and reinforcing at the top of the C Pillar will not be present. Therefore we fit the BEBB Tested C Pillar Plate to the van to safely Carry the VW Seat Belt. We give you a certificate for the plate with every installation



We then install a GENUINE VW Kombi Seat in the fabric to match your van – INCA or PLACE. Tassimo and Other VW Fabrics subject to availability and extra cost. This is an example of the 3 seat BENCH arrangement. We also offer the 2+1 LHD or RHD – again subject to availability of seating



All the VW Kombi Seats are QUICK RELEASE so if you need go from a PEOPLE CARRIER to a VAN or vica versa, this can be easily done in a few minutes. The seats also fold forwards if you are carrying something long in the rear.

---

Costs for all of the above:

TRIPLE BENCH IN INCA II (2003-2010)	£1250
TRIPLE BENCH IN PLACE (2010>)	£1450
2+1 IN INCA II (2003-2010)	£1450
2+1 IN PLACE (2010>)	£1650

---

**ALL INSTALLATIONS COME WITH A CERTIFICATE FOR THE C PILLAR REINFORCEMENT PLATE(S) THAT CONFORMS TO IN VEHICLE TESTING TO THE 76/115/EEC 2005/41/EC FOR M1 LOADINGS**

For more information, please call David on 07775 961 693 or email [sales@bebb.co.uk](mailto:sales@bebb.co.uk)

ALL PRICES ARE SUBJECT TO VAT @20%